

Installing a Second Post-Alert for 360° of Visibility:



What you need:

- One Post Alert
- Six Post-Alert adhesive tabs
- Towel

Installation Steps:

Remember that the MUTCD sign enhancement spec requires the post enhancement device to be the same color as the related sign and to be fastened directly under the sign with no more than 2 feet off the roadway elevation. If using the diagonal object marker style *Post-Alert*, note that the diagonal lines should point downwardly toward the side in which the motorist should travel.

Step 1:

Wipe down the Snap-Lok edges of both the installed and uninstalled *Post-Alerts*™ insuring removal of any dust, debris or foreign body.



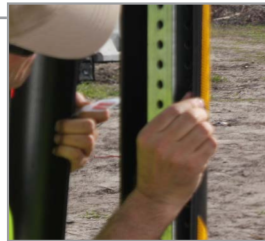
Step 2:

Peel off the *Post-Alert*'s adhesive tabs from the sheet and attach to the inside of the male Snap-Lok edge. Space them equally down the uninstalled *Post-Alert* at the approximate heights of the pre-drilled holes.



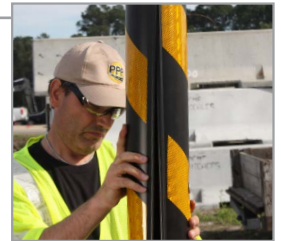
Step 3:

Repeat the *Post-Alert* adhesive tab application to the already installed *Post-Alert*.



Step 4:

Peel off the protective top sheeting from all of the tabs and insert both the male Snap-Lok edges into the females of the opposite *Post-Alert*.



Step 5:

Apply pressure by hand in a squeezing manner to snap the devices firmly and completely together.



Completion

Now your *Post-Alert* is securely fastened for 360° of visibility and conspicuity of the sign and it's post, Making your roadways safer for both pedestrians and motorists! ***Enhance the visibility of the median with the Median-Alert™.***

